



PNEUMATIC SOLID WASTE COLLECTION IN THE PARK ZARYADYE, MOSCOW

**Building AWCS to one of the world's
biggest city centers in 4 months.**



1967



1978

Park Zaryadye locates near Red Square in Moscow, Russia – on a former Rossiya Hotel site. The famous and glorious hotel was built 1967.

2015

Planning of the Zaryadye park begins. The Chief Architect is Vladimir Legoshin from MAHPI.



Vladimir Legoshin in the middle.



2006



2012



Major Sobjanin

President Putin

In 2006, the hotel was demolished and soon the idea of a modern city park was born.



9 September 2017

The park to be opened by the Moscow 870 years' celebration.

Environmental Requirements for the Green City Park

- Sustainable technologies used in creating an artificial microclimate in different parts of the 13 hectares park.
- Russia's 4 diverse landscapes brought together, enabling the millions of visitors to enjoy tundra, steppe, forest, and wetland circumstances.
- Park infrastructure hidden under the landscape.
- The heavy truck traffic minimized.



Requirements for Efficient Solid Waste Management

- Waste not transported with trucks.
- Reliable system for collecting waste produced by 12 million park visitors yearly.
- Trustworthy partner with track record of successful AWCS implementations.



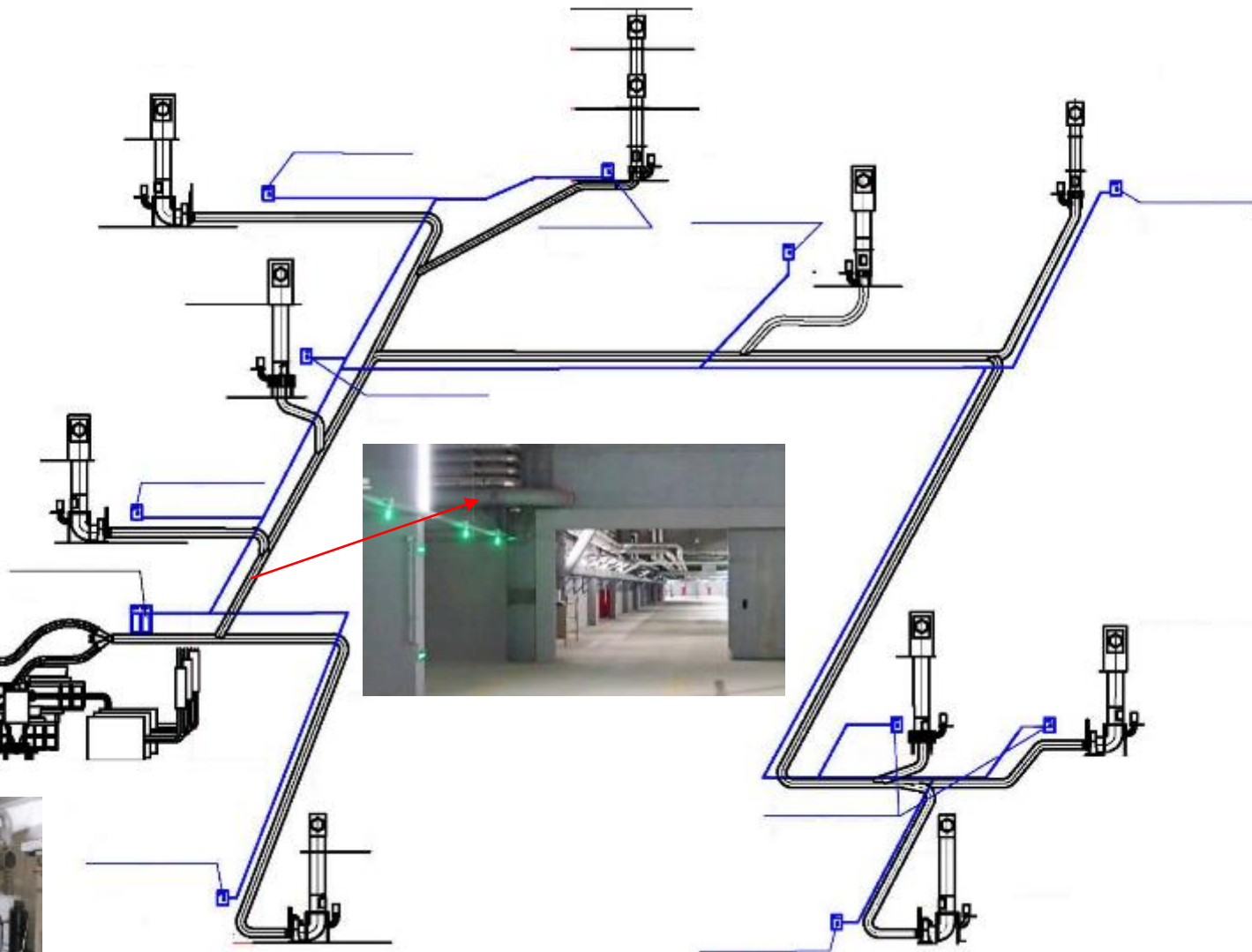
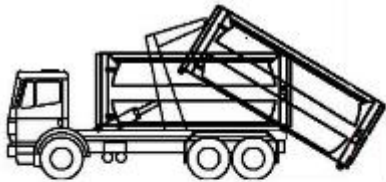
AWCS Solution – Waste Transferred Underground

- MariMatic® Ltd., together with Moscow based partner OOO Telekom Engineering, developed the ultimate underground waste collection solution to serve the park in collecting mixed waste, but also to meet the park's requirements for sustainability and energy efficiency.
- MariMatic designed, supplied, built and commissioned the AWCS solution.

MetroTaifun®
Automatic Solid Waste Collection



- Waste fraction: mixed waste
- 10 waste collection stations
- 11 doors for chutes
- 10 formators
- Vacuum pipeline length: 600 m
- 3 x 37 kW vacuum blowers
- 2 waste containers
- 1 compactor
- Build up June - September 2017

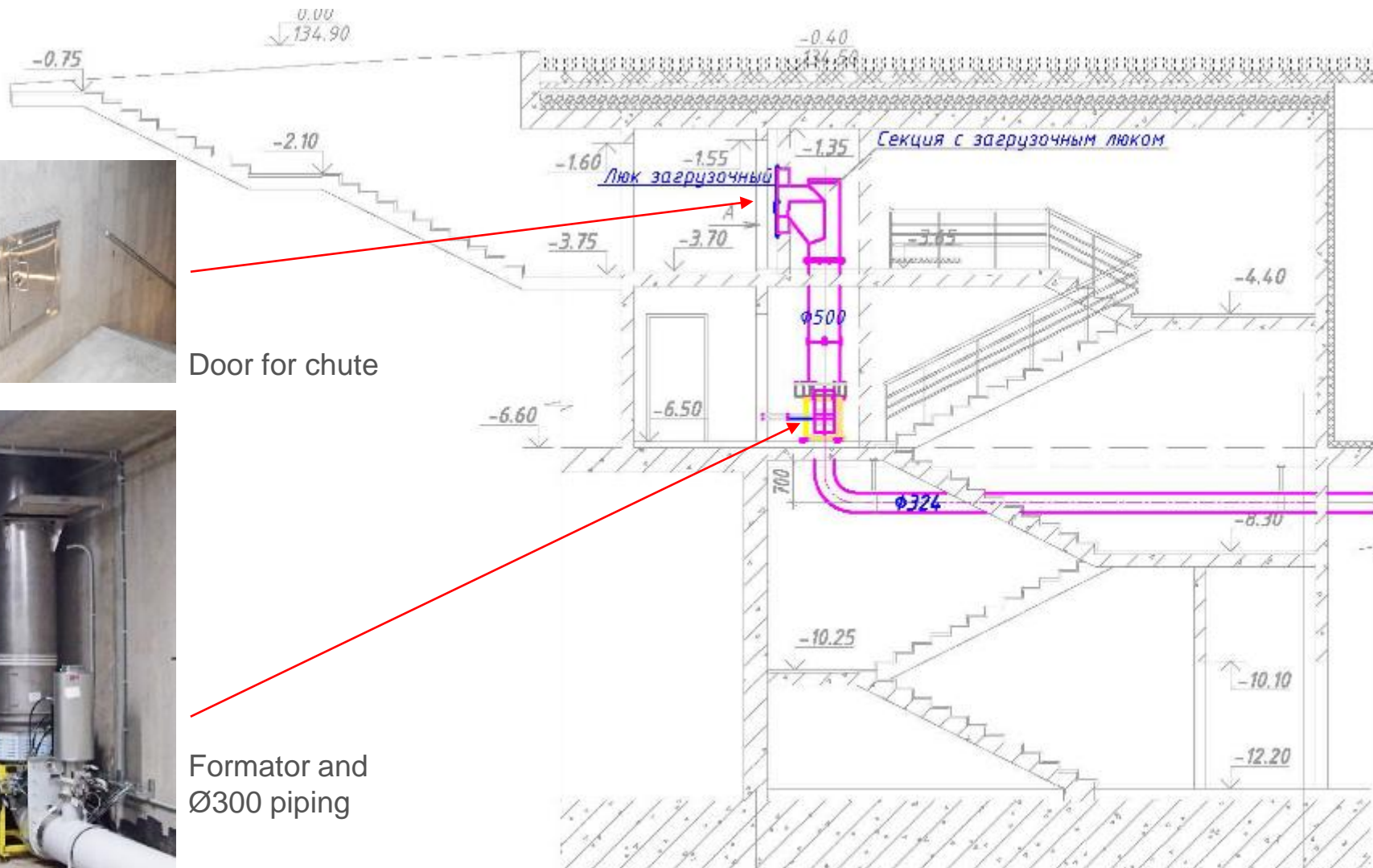




Door for chute



Formator and
Ø300 piping





AWCS PROJECT

**The park to be opened by the Moscow
870 years' celebration on the 9 Sept 2017**



26 May 2017

Products ready for the shipment from MariComp manufacturing plant in Vantaa.



9 June 2017

The first delivery arrived to Red Square in Moscow.



20 June 2017

Building the park and installing the system underground.



25 July 2017

Waste containers ready for assembly in the wastes transfer terminal.



8 August 2017

Planting in the park for green surroundings.



8 August 2017

Installation of wall hatches.



9 August 2017

Installation of vacuum pumps.



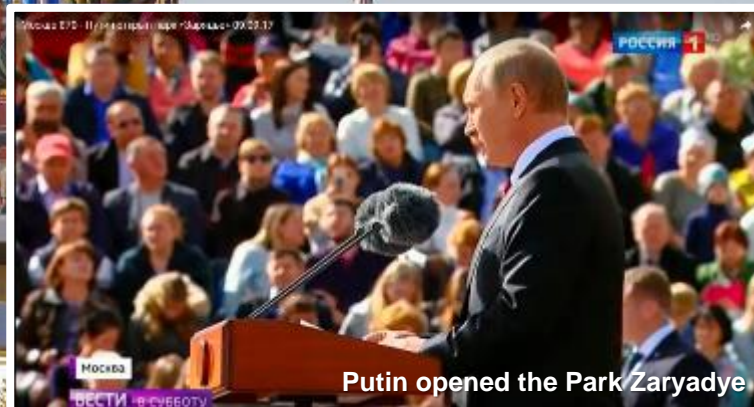
9 August 2017

Installation of automation.



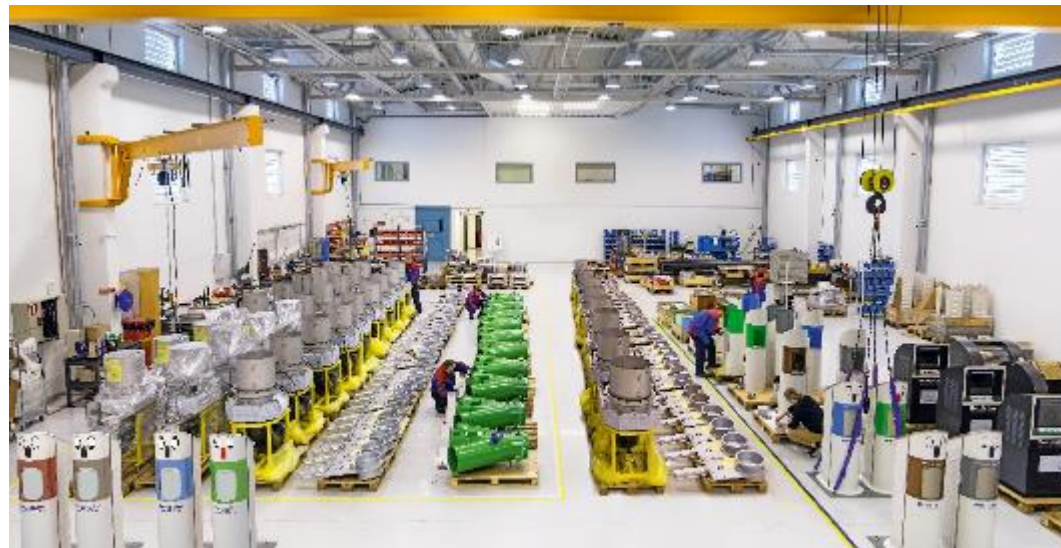
PARK ZARYADYE

Opened by the Moscow 870 years' celebration on the 9 September 2017





MariComp manufacturing plant in Vantaa, Finland.



MariComp assembly in Vantaa, Finland.



MariComp manufacturing plant in Tallinn, Estonia.



A robot welding a waste container at MariComp Tallinn plant.



2013 – 2028
Kivistö residential area in Vantaa, Finland



2013 – 2017
Vällingby Parkstad in Sweden.



2014 – 2025
Kruunuvuorenranta in Helsinki, Finland



2013
Malmi Hospital in Helsinki, Finland



2011 ->
Mecca in Saudi-Arabia



2011 – 2040
Tripla City and Shopping Center in Helsinki, Finland



2013 – 2017
Vallastaden in Linköping, Sweden



2017 – 2018
VTB Arena Park in Moscow, Russia



2015 – 2018
Zhuhai in China

WELCOME TO VISIT THE WORLD'S LARGEST R&D AND DEMO CENTER

“Doing the homework”.



MetroTaifun R&D and Demo Centre,
Järvenpää - Finland



Automatic Waste Collection for Sustainable Cities

“You name it, we’ll do it”!



www.marimatic.com

